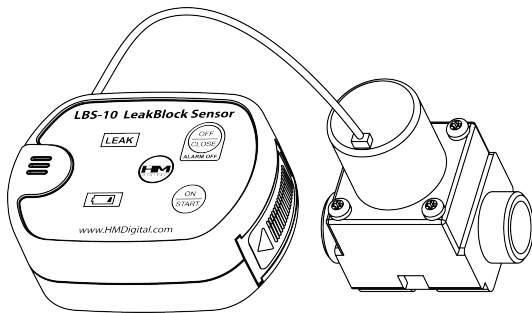


HM DIGITAL

LeakBlock Sensor

model: LBS-10

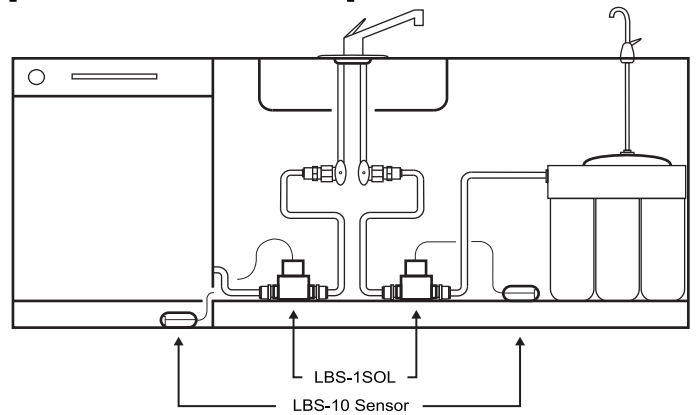


USER'S GUIDE

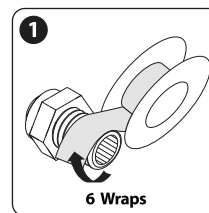


Instructions of Use: To be used in Municipal Water applications only. Well Water Application accepted if water is below 1200 ppm.

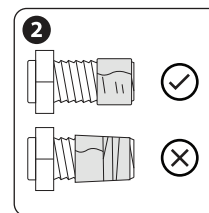
[Installation Illustrations]



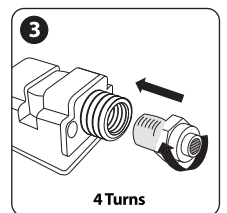
[When Using a Male Plastic Fitting]



Use teflon tape to wrap around 6 times in clockwise direction



Do not offset the teflon tap across the treads



Tighten the fitting by 4 complete turns.

[Overview]

Our LBS-10 LeakBlock Sensor can be used for numerous applications to avoid flooding and unnecessary leakage.

The LBS-10 LeakBlock Sensor is perfect for traditional applications: RO Systems, inlets of a Filter System, and individual Filters. The robust commercial design of our latching valve, enables the LBS-10 LeakBlock Sensor to be used for additional applications such as:

Residential: Refrigerators Inline Filters, Dishwashers, Water Coolers, Coffee Makers, Espresso/Cappuccino

Commercial: Coffee Makers , Espresso/Cappuccino, Drink Dispensers, Water Coolers, Ice Machines, Wash Basins, Sinks, Toilets, Water Dispensers

[Specification]

Temperature Range: 1~60°C / 34~140°F

Maximum Flow Rate: 6 GPM / 23 LPM

Maximum Pressure: 116 psi / 8.0 Bar $\pm 10\%$

Connection: 3/8" FNPT x 1/2" MBSP (British Standard Pipe Male, NOT National Pipe Thread NPT)

[Package Includes]

1 LBS-10 LeakBlock Sensor consisting of Latching Valve and Sensor

1 Installation Instructions and Manual

1 9v Battery

[Installation Instructions]

1. Depending the application use the proper fitting with the solenoid valve. Keep in mind the Male threads are BSP not NPT. Several fittings are available for Water use.

Plastic Fittings:

3/8" NPT x 1/4" TU : Water Filters, Coffee Makers, Water Coolers

3/8" NPT x 3/8" TU : Water Filters, Water Coolers

3/8" NPT x 1/2" TU : High flow (Up To 6 GPM) Water Systems

Brass Fittings:

3/8" NPT x 3/8" Compression : Dishwashers, Coffee Makers, Ice Machines, Sinks, Toilets

Utilize a S.S. Flex Line on these applications.

*** IMPORTANT: NOTE THE ARROW AT THE BOTTOM and SIDES OF THE VALVE.

BE SURE TO FOLLOW THE CORRECT DIRECTION OF WATER FLOW!

2. Be sure to use Teflon Tape on fittings when installing Male Threads into the Latching Valve.
3. Connect line accordingly to Fittings.
4. Make sure LBS-10 Latch Valve is placed flat on the ground or cabinet floor. The valve is Heavy and could cause the tubing to bow and create a leak at the inlet and outlet of the Latching Valve. Use extra tubing on the inlet of the LBS-10 Latch Valve if Installing in an existing application where the existing tubing may be too short.
5. Turn on water. Check for leakages around fittings and tubing.
6. Remove cover on end of unit. Install 9v Battery to unit. When battery is connected the unit will "Beep" three times and LED will blink three times to confirm power is on. Place Battery bottom first into unit with wires pointing out. Replace Cover over battery.
7. LBS-10 will "Beep" three times and water will flow through Latching Valve when the battery is correctly installed.
8. Check if the latching valve closes by pressing the [OFF/CLOSE] button. you will hear a "Beep" when the valve is closed. Turn on LBS-10 again after checking.
9. Remove protective film from LBS-10 LeakBlock Sensor.
10. Place LBS-10 LeakBlock Sensor on a clean, debris-free surface close to where water could leak. Check for hanging tubes or lines that may be present where water could trail or flow away from LBS-10 LeakBlock Sensor. You want to be sure if there is a leak that the LBS-10 LeakBlock Sensor will sense the leak and shut off the water servicing the product you want to control.
11. When a leak occurs the LBS-10 LeakBlock Sensor will Latch the valve closed and sound "Beep-Beep-Beep". The alarm will continue until the LBS-10 LeakBlock Sensor is turned off.
12. If a leak occurs simply shut off the incoming water supply and make sure the surface of LBS-10's installation is dried. Press [ON/OFF] button for 2 seconds on the LBS-10 LeakBlock Sensor. A "Beep" will sound three times indicating the LBS-10 LeakBlock Sensor is ready for use.

Note:

When the battery is low, the sensor will "Beep" three times every three Minutes with blinking BATT LED light.

When the battery is very low, the sensor will automatically latch close and sound the alarm every one minute with BATT LED continually blinking.

To replace Battery follow steps 6, 7, and 10. Your LBS-10 LeakBlock Sensor is ready for use.

[Leak Block Sensor Limited Warranty]

ONE YEAR LIMITED WARRANTY

This HM Digital, Inc. ("the Company") product (LBS-10) is warranted to the purchaser against defective materials and workmanship for one (1) year from the date of purchase.

What is covered: Repair parts and labor, or replacement at the Company's discretion. Transportation Charges for repaired or new product to be returned to the purchaser.

What is NOT covered: Transportation charges for the defective products to be sent to the Company. Any consequential damages, incidental damages, or incidental expenses, including damages to property. This includes damages from abuse or improper maintenance such as tampering, wear and tear, water damage, or any other physical damage. The Company's products are not waterproof and should not be fully submerged in water. Products with any evidence of such damage will not be repaired or replaced. All Warranty VOID if Latch Valve is tampered with or disassembled. See additional note below.

To obtain warranty service, please contact 800.383.2777 or email Warranty@HMDigital.com to receive further instructions. Before sending the product back to us, please include the following below,

- | | |
|-------------------------|---------------------------------------|
| •Your name | •Phone number/ Address |
| •Description of problem | •Proof of purchase, must include Date |

*** If a returned product does not include the above-mentioned items, the Company reserves the right to refuse warranty service.**

Implied Warranties: Any implied warranties, including implied warranties of merchantability and fitness for a particular purpose, are limited in duration to **ONE YEAR** from the date of purchase. Some states do not allow limitations on how long an implied warranty lasts, so the above limitation may not apply to you. To the extent any provision of this warranty is prohibited by federal and state law and cannot be preempted, it shall not be applicable. This warranty gives you specific legal rights, and you may also have other rights, which vary from state to state.

NOTE: Warranties are product-specific. Third-party products and products deemed by HM Digital as "accessories" are not covered under warranty. Third-party products include, but are not limited to, batteries and spoid. Accessories included, but not limited to, detachable cover and product boxes.

This warranty and all information contained herein copyright HM Digital, Inc. The contents of this warranty cannot be reprinted without the permission of HM Digital, Inc.